

# MODERN LIFE, IMPECCABLE STYLE.



## GURGAON GREENS

Modern living is today about luxury and privacy. Presenting the perfect space that brings this together - Gurgaon Greens. A master-planned gated development, next to the Dwarka Expressway, Sector 102, Gurgaon. Spread across approx. 13 acres, Gurgaon Greens has been envisioned as a modern community with premium homes built around central greens. Amenities, landscaped theme gardens, water bodies, world-class infrastructure and a clubhouse complete the secure, serene space. One you can call your own.



# PROPOSED MASTER PLAN



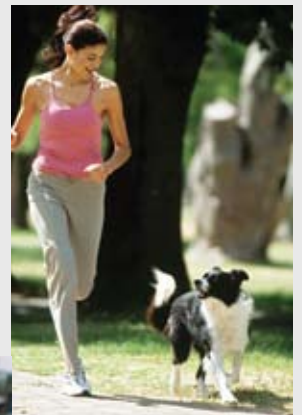
## LEGEND

- A Entry
- B Ornamental Water Body
- C Clubhouse cum Recreational Centre
- D Swimming Pool
- E Central Greens
- F Water Body
- G Jogging Track
- H MLCP and Tennis Courts



## Features that make a difference

- Located on Basai Road, the existing State Highway.
- Central Greens spread over almost 8 Acres.
- Premium 3 Bedroom Homes with S. Room.
- All Towers facing Greens.
- 2 Apartments on each Floor, with 2 Elevators.
- Jogging Track, Health Club and Tennis Courts.
- Swimming Pool with Splash Pool.
- Dedicated Play-areas for Children.
- Efficient power back-up.
- Perimeter Security.

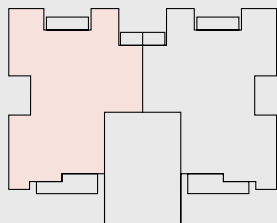
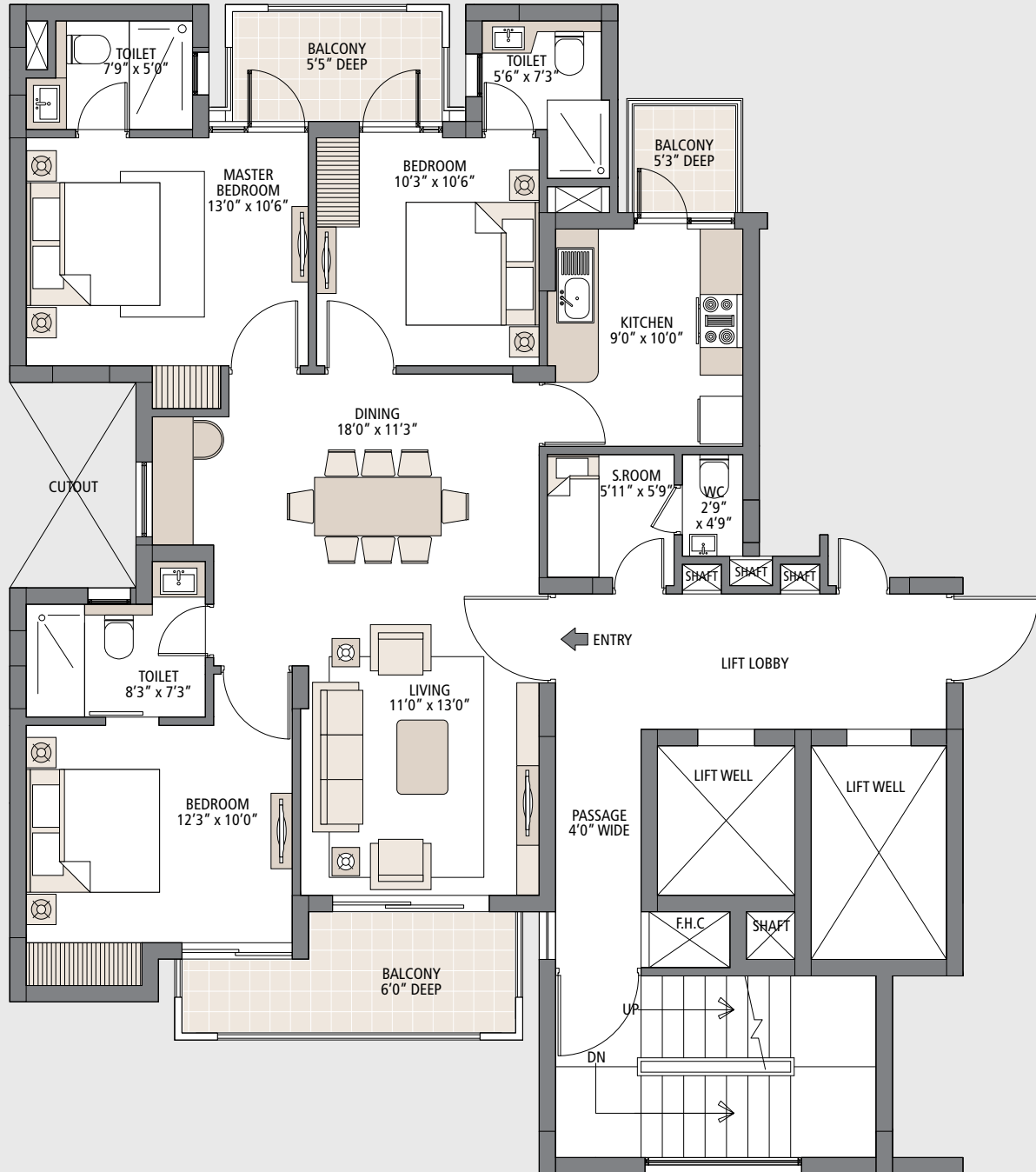


# Typical Floor Plan



Saleable Area: 1650 sq. ft.

3 Bedroom, 3 Bathroom, Living, Dining and S. Room



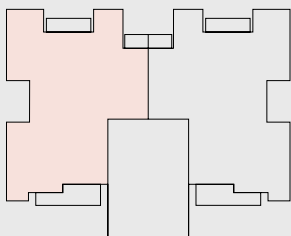
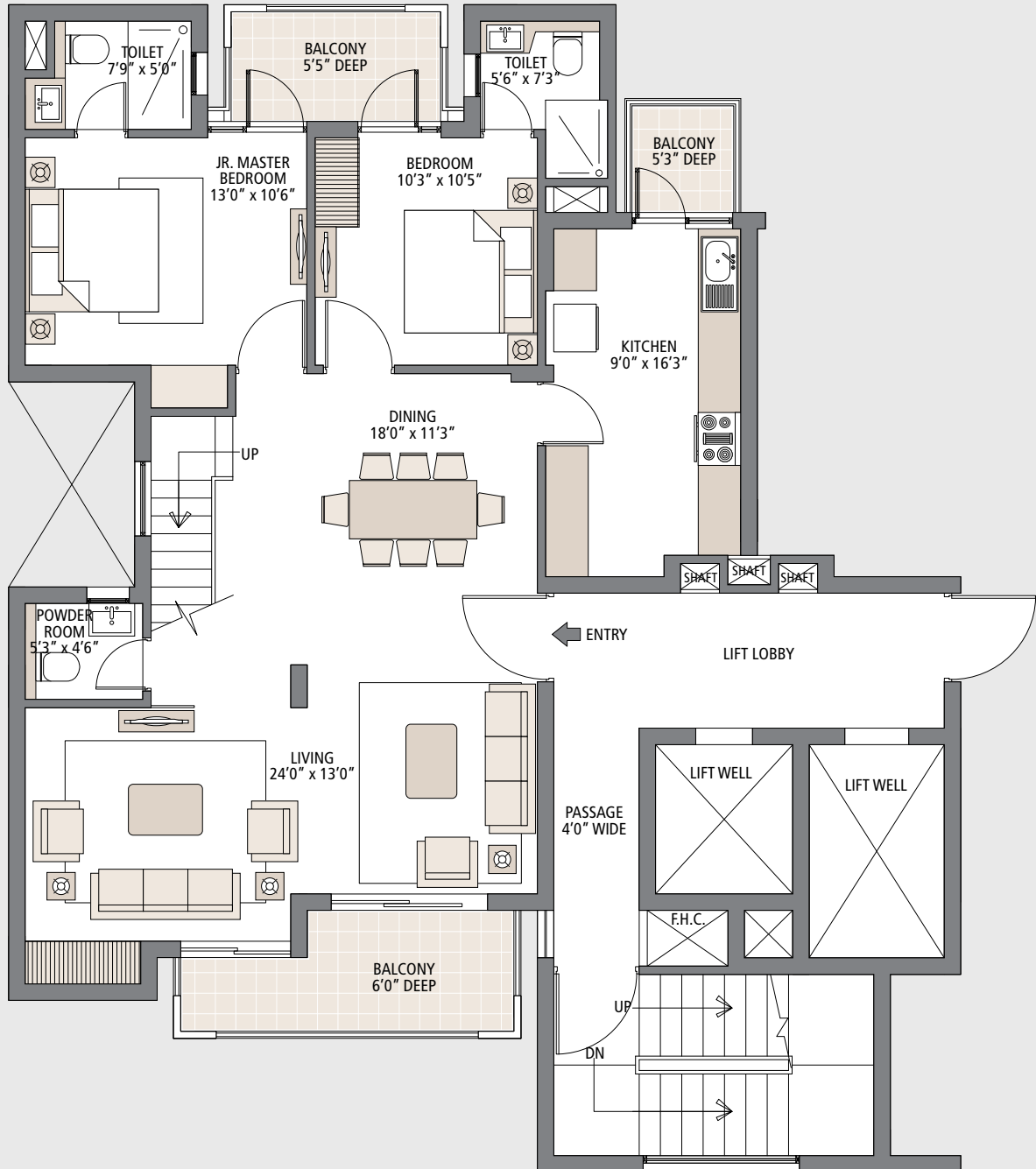
# Penthouse Floor Plan



Lower Level

Saleable Area: 3200 sq. ft.

4 Bedroom, 4 Bathroom, Living, Dining,  
S. Room and Family Lounge



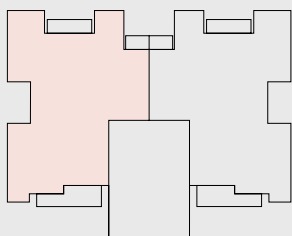
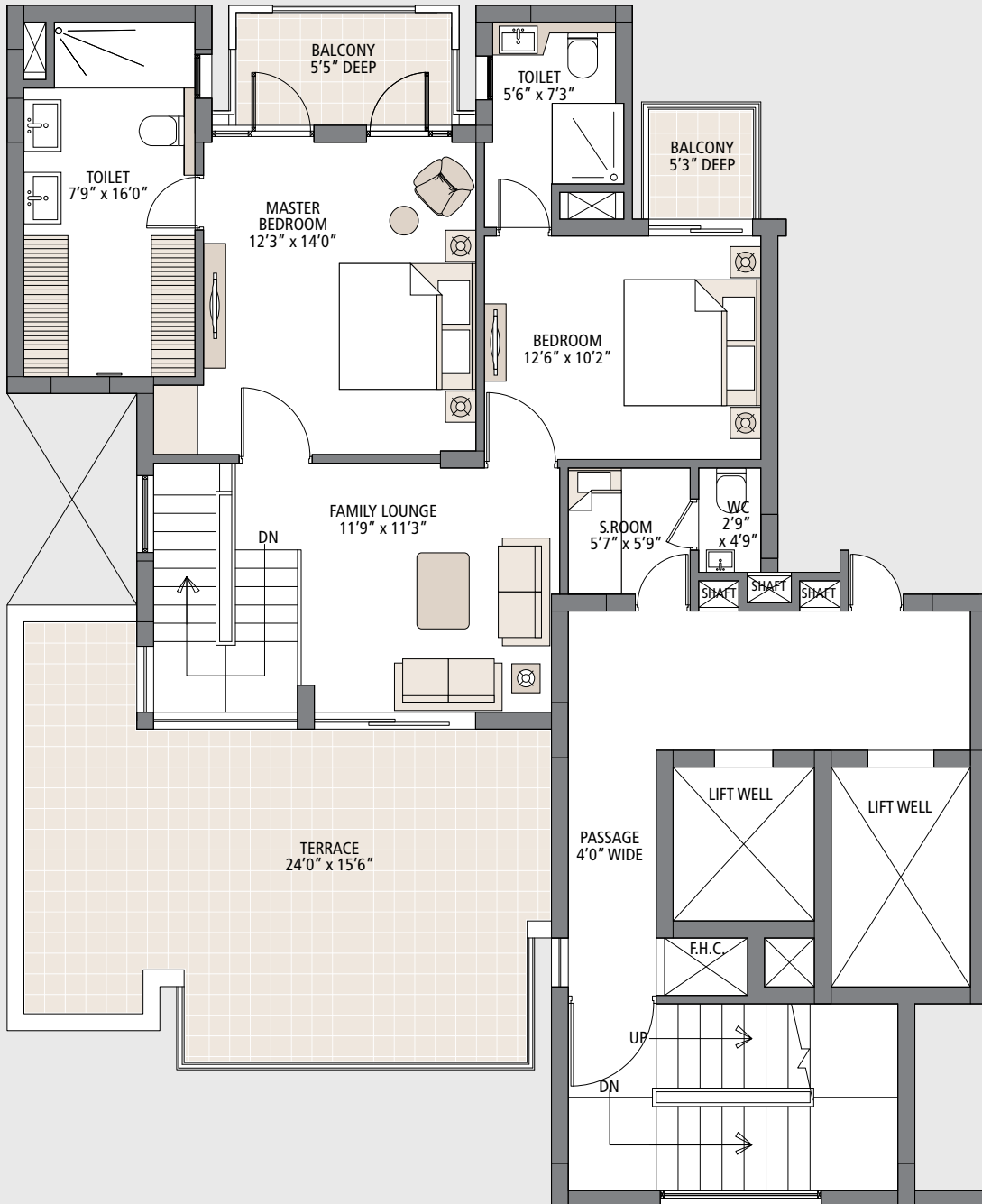
# Penthouse Floor Plan



Upper Level

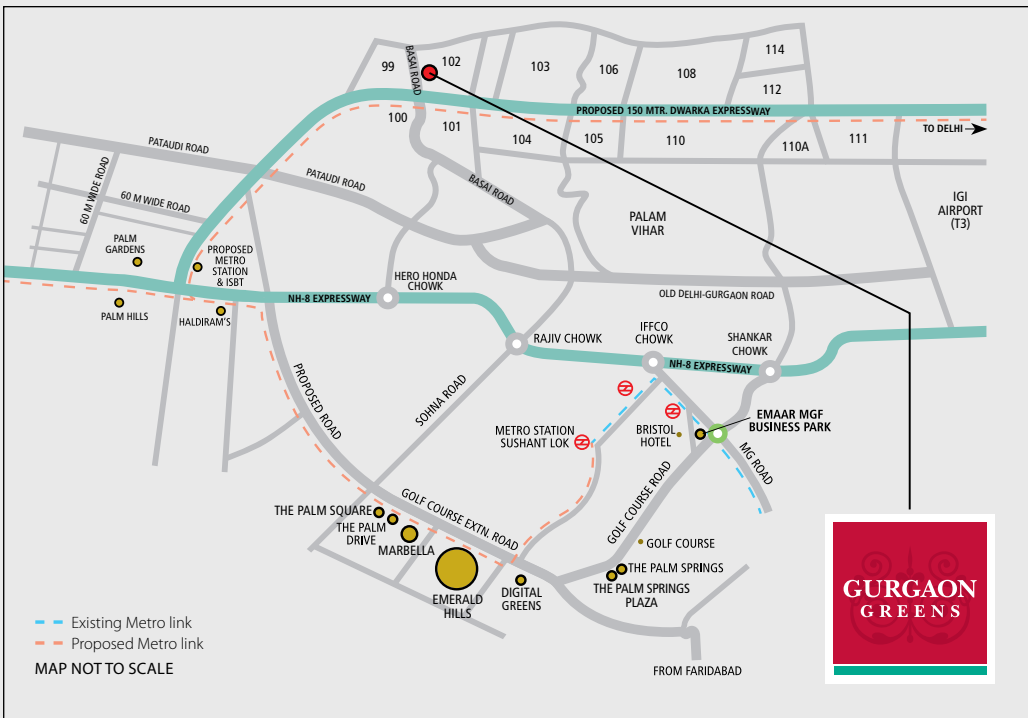
Saleable Area: 3200 sq. ft.

4 Bedroom, 4 Bathroom, Living, Dining,  
S. Room and Family Lounge





Artistic rendering



CREATING A NEW INDIA.

**Emaar MGF Land Limited**

ECE House, 28 Kasturba Gandhi Marg, New Delhi 110 001

**Sales Office**

Emaar MGF Business Park, Mehrauli-Gurgaon Road  
 Sikandarpur Crossing, Sector 28, Gurgaon 122 002

**Email: [enquiries@emaarmgf.com](mailto:enquiries@emaarmgf.com) | [www.emaarmgf.com](http://www.emaarmgf.com)**

Disclaimer, please note: In the interest of maintaining high standards, all floor plans, layout plans, areas, dimensions, features and specifications mentioned in this brochure are indicative, are subject to change without notice as decided by the company or by any competent authority. Soft furnishing, cupboards, kitchen cabinets, furniture and gadgets are only indicative and do not form a part of the offering. 1 Sq. Mtr. = 1.196 Sq. Yds. & 1 Sq. Mtr. = 10.76 Sq. Ft. Readers are advised to make their own professional judgement with respect to participating in this project/development and not base decision on the information given herein.

