



It's the most preferred location of Gurgaon with its proximity to the expressway, its abundant green cover and a host of exclusive features that redefine the conventions of Indian residences. Welcome to the next level.

LIVE AMONGST NATURE.

TAKE THE EXPRESSWAY TO HAPPINESS.

LOCATION ADVANTAGES

- Bang on Dwarka Expressway
- 2 Minutes from Proposed Metro
- 5 Minutes from New Dohi
- 7 Minutes from IGI Airport
- 10 Minutes from NH-8

KEY FEATURES

- 3 Maintenance for 5 Years
- Provision Power and Water Back-Up
- Exclusive Children's Play area
- Picturesque Landscaping
- State of the art, contemporary construction and architecture
- Well Ventilated apartments with abundant natural light

HOME IN
GURGAON'S POSH AREA
SECTOR 103

1 BHK 14.37 LAKHS
ONWARDS

2 BHK 23.86 LAKHS
ONWARDS

DWARKA
EXPRESSWAY IS
NOW OPEN

FOR EXCLUSIVE CORPORATE TIE UPS - 9560 319 333
FOR ASSOCIATE ENQUIRIES - 9650 015 015

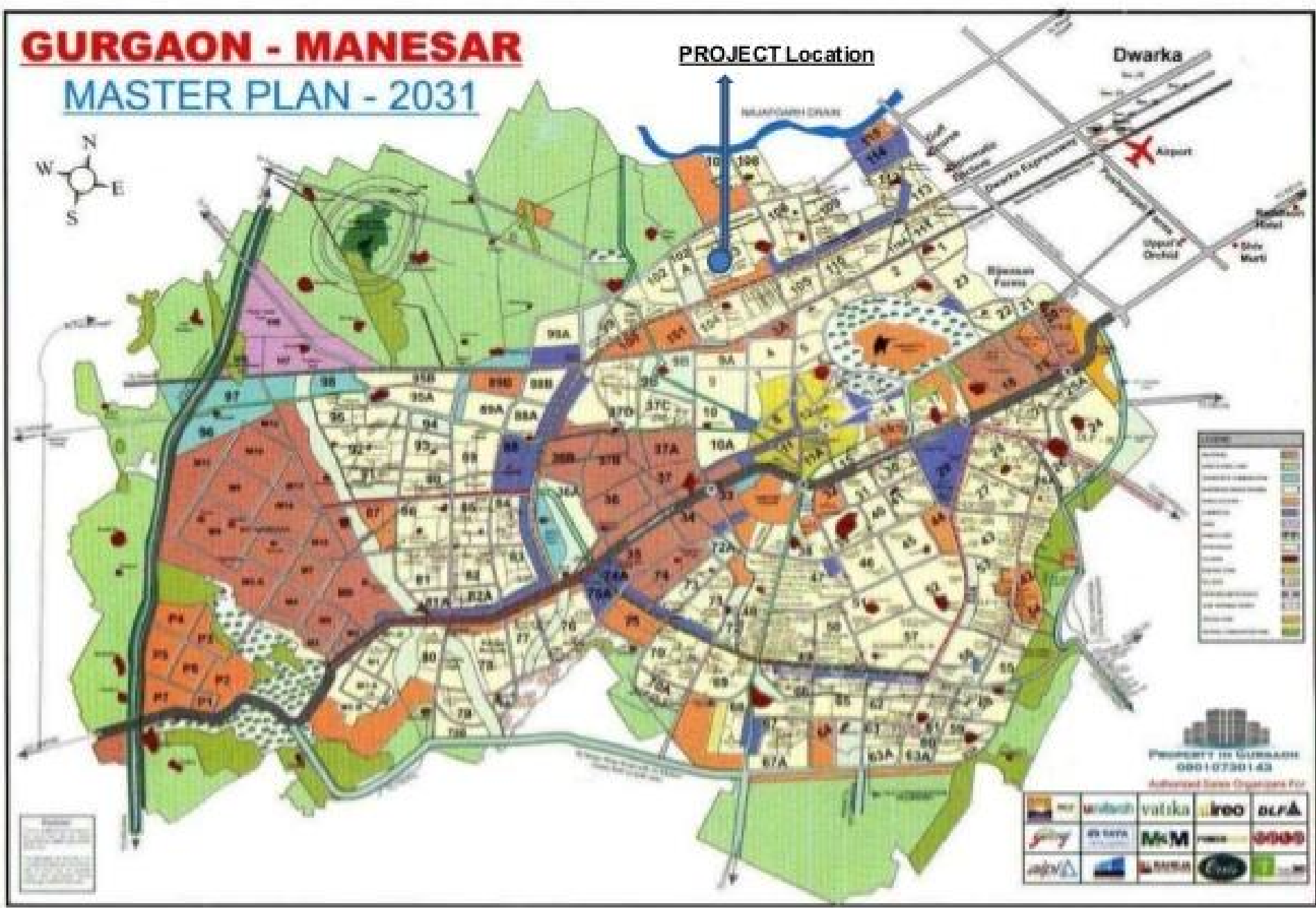
PAY JUST **5%** TO APPLY

GRANDIVA
EXPRESSWAY TO HAPPINESS
SECTOR 103, GURGAON



GURGAON - MANESAR

MASTER PLAN - 2031



PROJECT Location

Dwarka

Airport

LEGEND

| | |
|----------|-------------|
| [Green] | Green Space |
| [Orange] | Residential |
| [Yellow] | Commercial |
| [Blue] | Water Body |
| [Grey] | Road |
| [Red] | Other |

PROPERTY TO GURGAON
001-0730143

Authorized Sales Organizers For

| | | | | |
|--------|--------|--------|--------|--------|
| [Logo] | [Logo] | [Logo] | [Logo] | [Logo] |
| [Logo] | [Logo] | [Logo] | [Logo] | [Logo] |
| [Logo] | [Logo] | [Logo] | [Logo] | [Logo] |

| Unit Type | Type | Carpet Area | Balcony Area | Total Units | Total Cost | Application Money | 20 % amount | 12.5% amount |
|---------------|------|-------------|--------------|-------------|------------|-------------------|-------------|--------------|
| 1BHK | A | 351 | 70 | 24 | 1437660 | 71883 | 287532 | 179708 |
| 1BHK | B | 356 | 70 | 320 | 1459620 | 72981 | 291924 | 182453 |
| 1BHK | C | 360 | 70 | 24 | 1475200 | 73760 | 295040 | 184400 |
| 1BHK | D | 362 | 70 | 224 | 1482440 | 74122 | 296488 | 185305 |
| 1BHK | E | 366 | 70 | 96 | 1499880 | 74994 | 299976 | 187485 |
| 1BHK | F | 419 | 70 | 48 | 1711940 | 85597 | 342388 | 213993 |
| 2BHK | A | 585 | 94 | 104 | 2387000 | 119350 | 477400 | 298375 |
| 2BHK | B | 605 | 95 | 266 | 2467840 | 123392 | 493568 | 308480 |
| 2BHK | C | 613 | 95 | 272 | 2500780 | 125039 | 500156 | 312598 |
| 2BHK | D | 621 | 95 | 32 | 2532380 | 126619 | 506476 | 316548 |
| 2 bhk + study | A | 644.54 | 87.74 | 62 | 2622030 | 131102 | 524406 | 327754 |

2 bhk + study Flats are only for management qouta

1 bhk - Type A
(350.69 SQ. FT. + 69.84 SQ. FT.)



1 bhk - Type B
(356.18 SQ. FT. + 69.84 SQ. FT.)



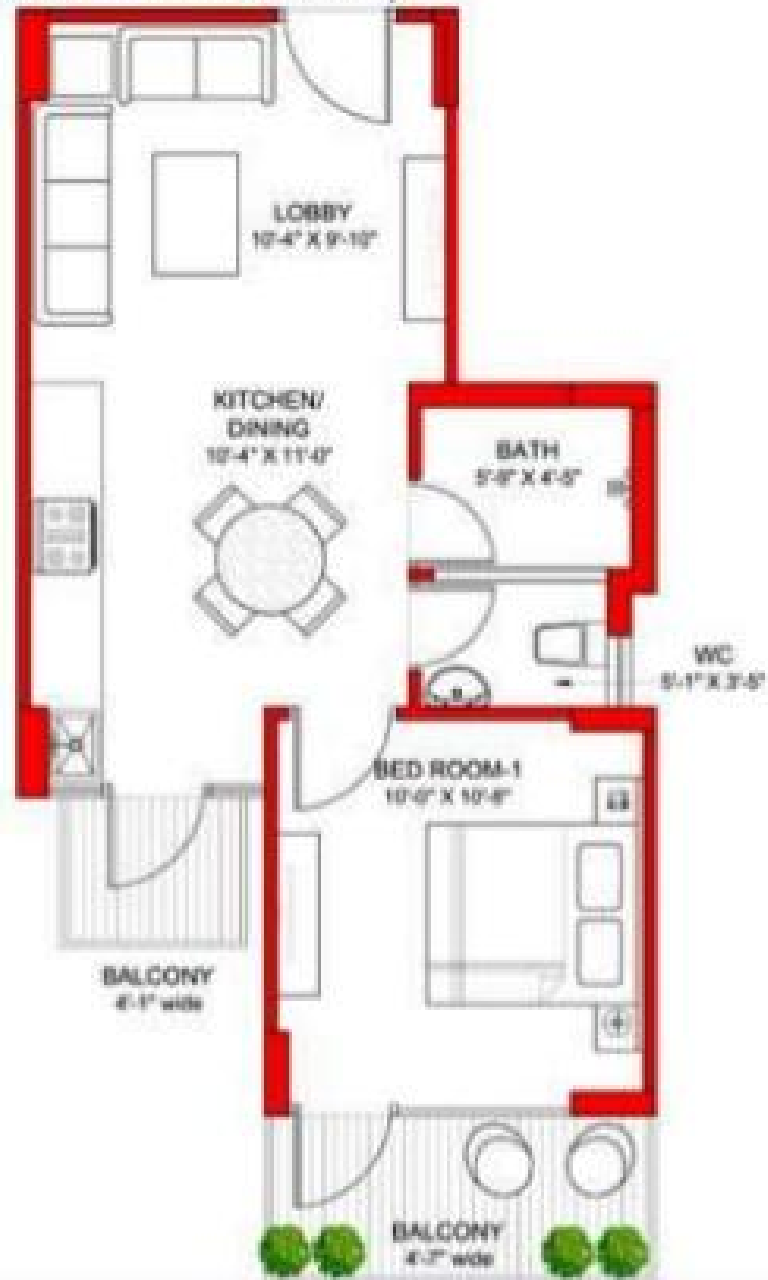
1 bhk - Type C
(359.62 SQ. FT. + 69.84 SQ. FT.)



1 bhk - Type D
(361.88 SQ. FT. - 69.84 SQ. FT.)



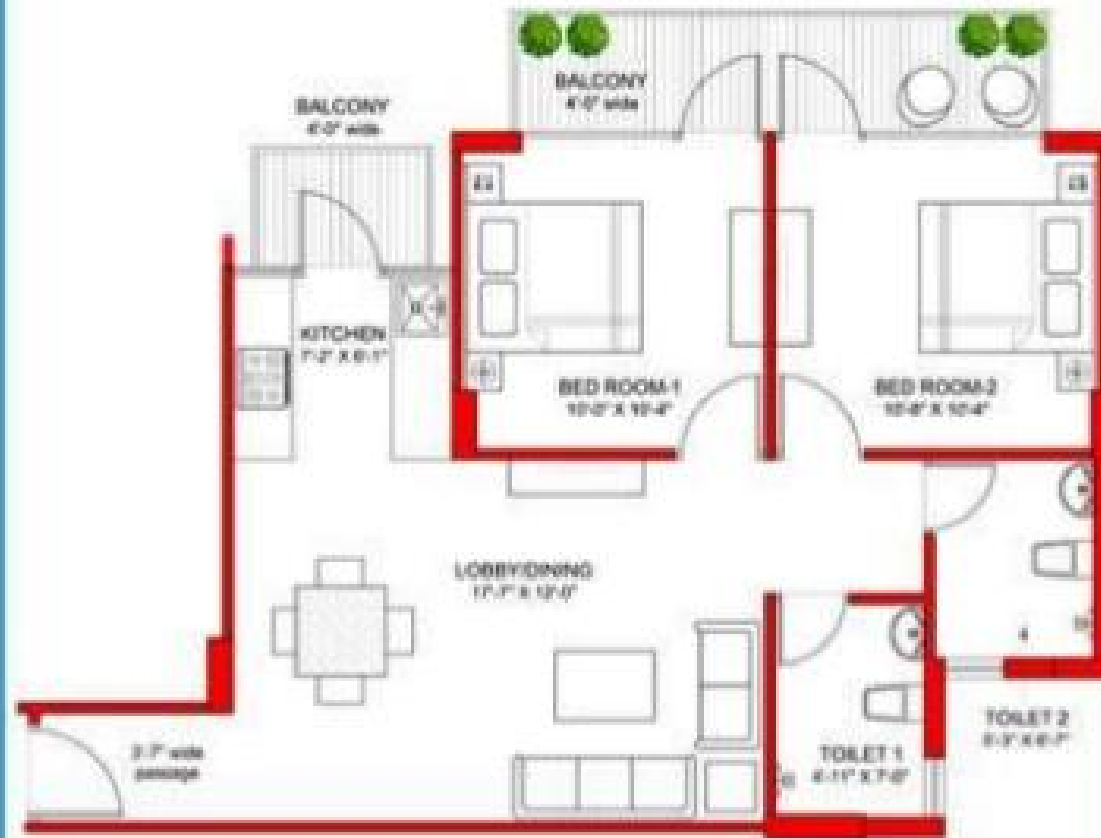
1 bhk - Type E
(366.24 SQ. FT. - 69.84 SQ. FT.)



1 bhk - Type F
(419.25 SQ. FT. + 69.84 SQ. FT.)



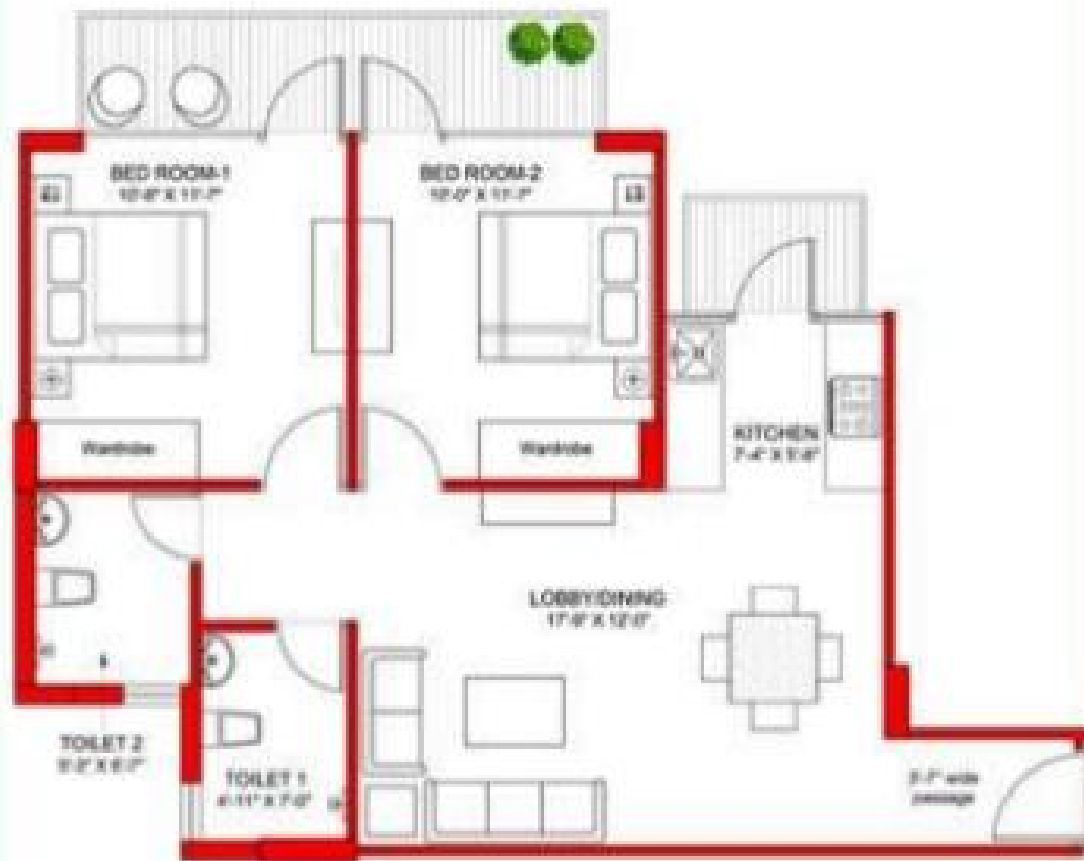
2 bkk - Type A
(584.94 SQ. FT. + 94.45 SQ. FT.)



2 bkk - Type B
(605.09 SQ. FT. + 94.94 SQ. FT.)



2 bkk - Type C
(613.31 SQ. FT. + 95.10 SQ. FT.)



2 bkk - Type D
(621.23 SQ. FT. - 94.94 SQ. FT.)



3 BHK - 644.54 SQFT + 87.74 SQFT
Only for management quota

