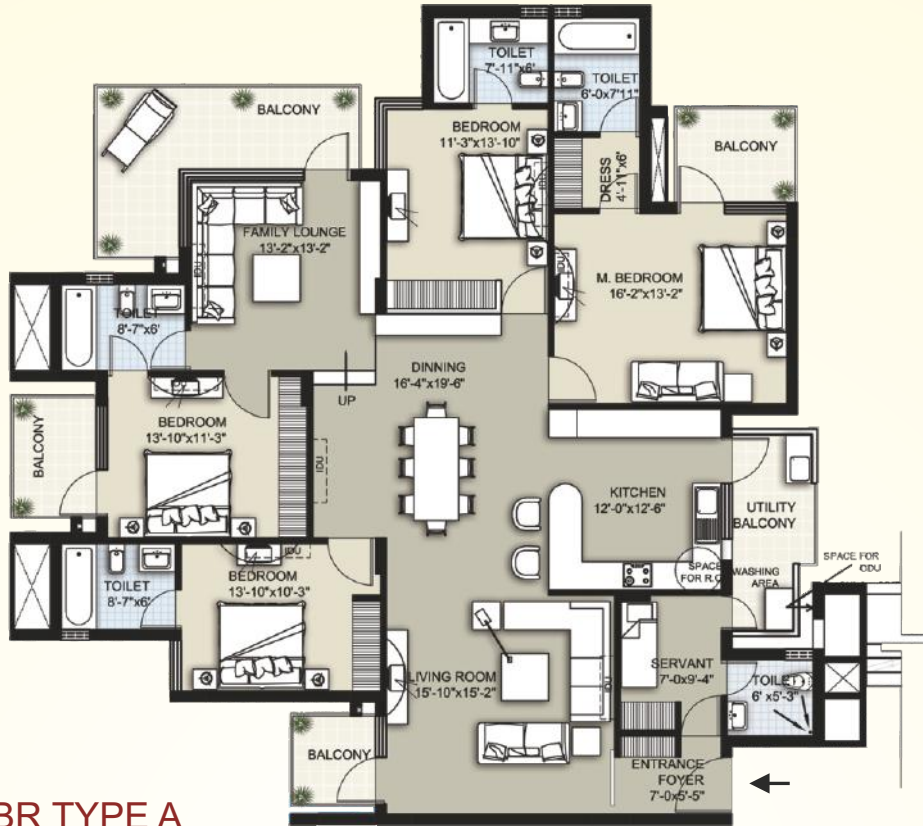


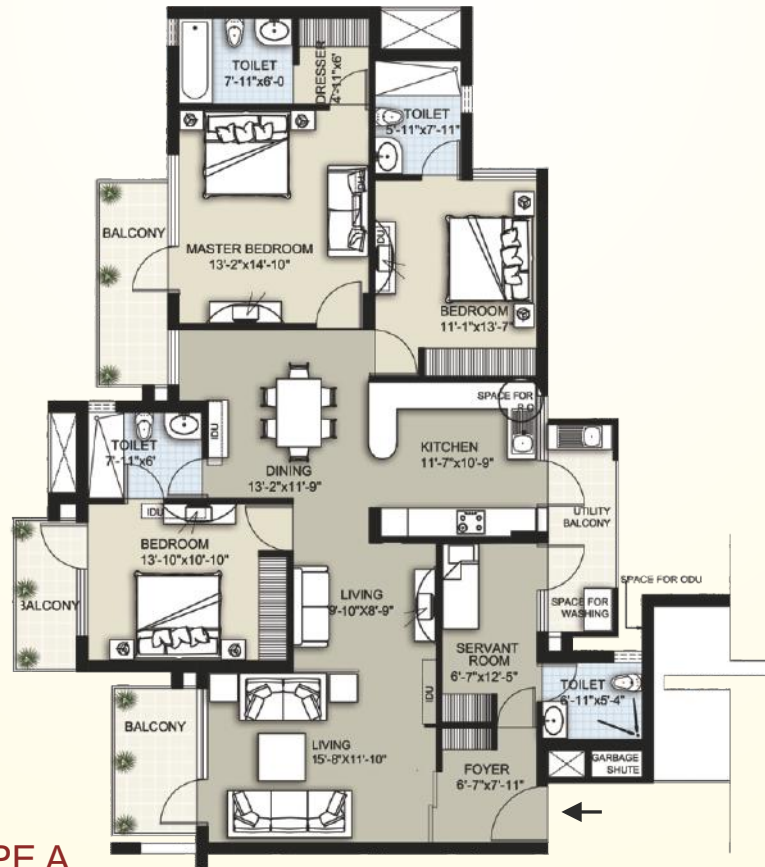
atharva

Exclusive Luxury Homes
Sector-109, Gurgaon

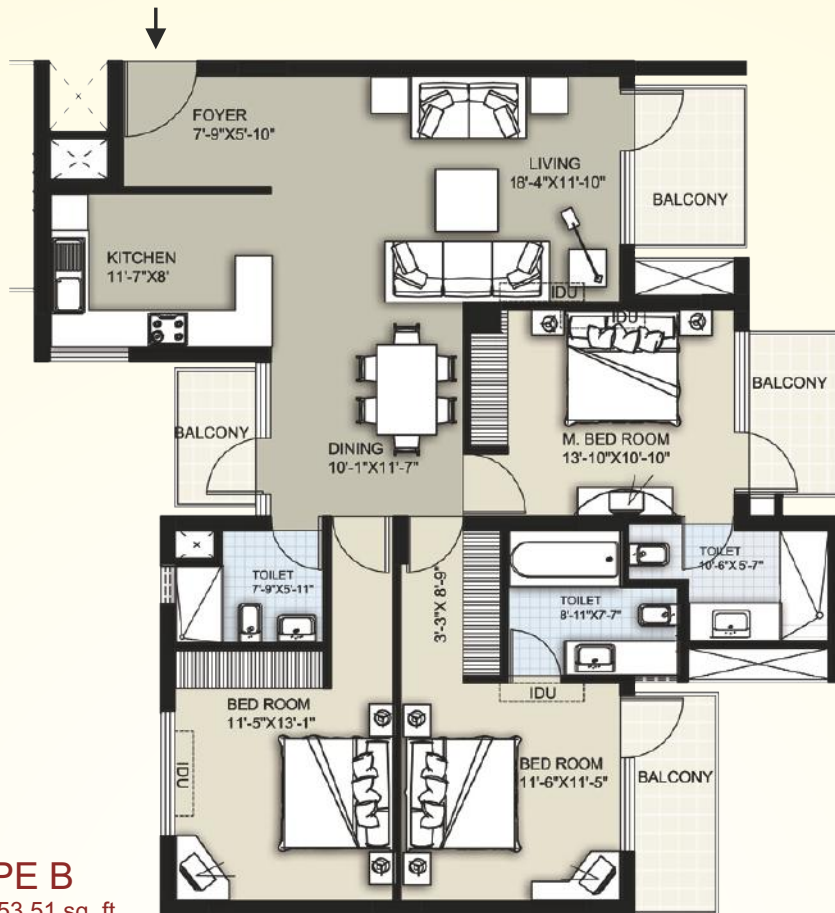




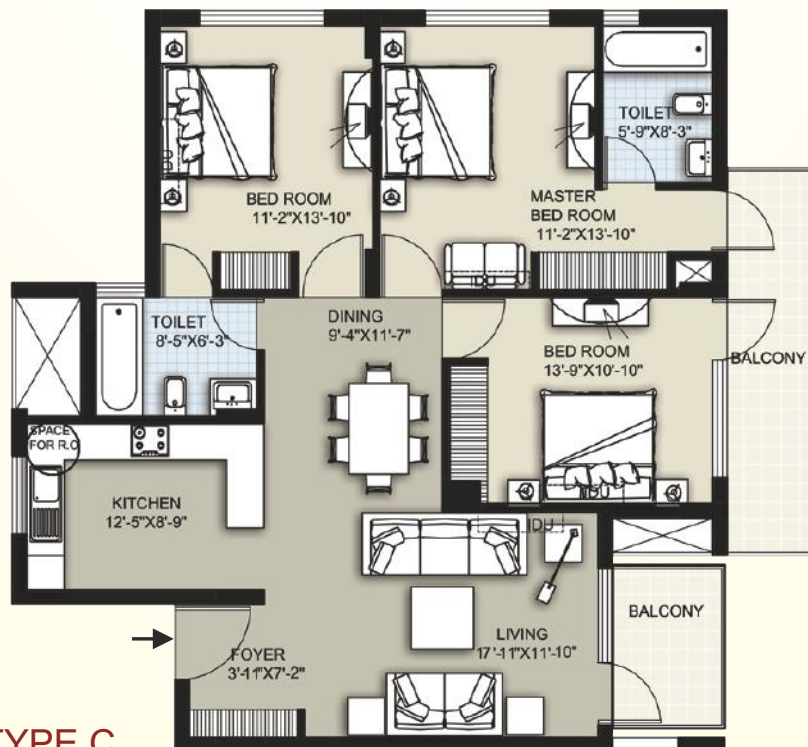
4 BR TYPE A
 Saleable Area : 3054.75 sq. ft.



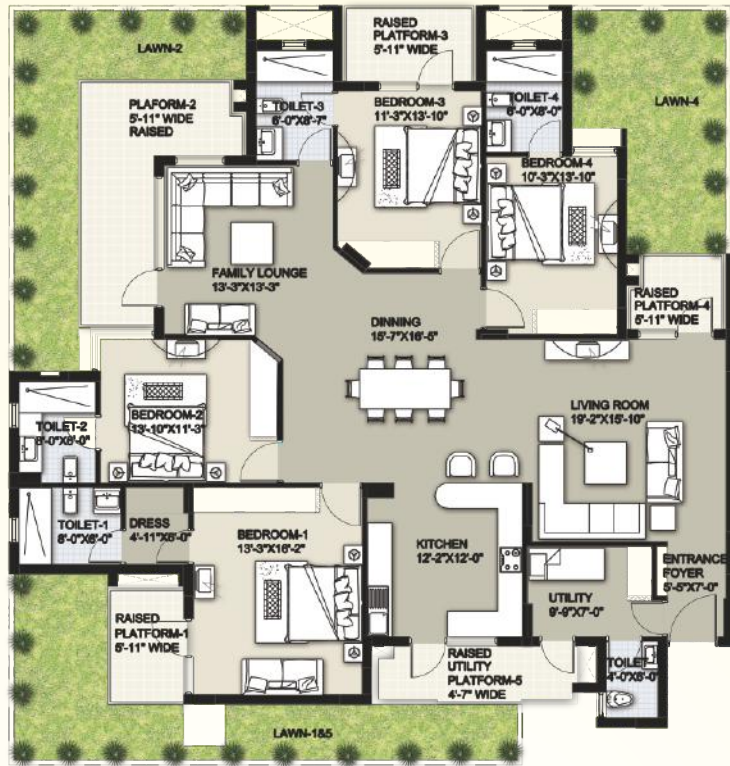
3 BR TYPE A
 Saleable Area : 2381.48 sq. ft.



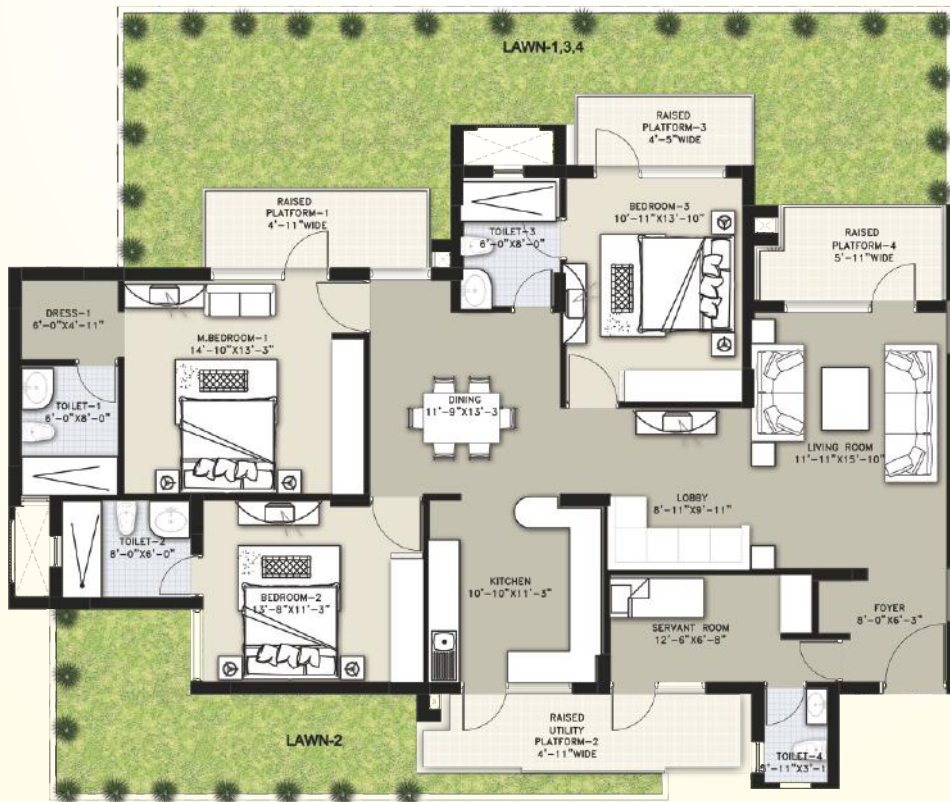
3 BR TYPE B
 Saleable Area : 1953.51 sq. ft.



3 BR TYPE C
 Saleable Area : 1807.59 sq. ft.



PRESIDENTIAL TYPE A (TOWER A)
 Saleable Area : 3054.75 sq. ft. & Courtyard : 698.54 sq. ft.



PRESIDENTIAL TYPE B (TOWER B,C,D)
 Saleable Area : 2381.48 sq. ft. & Courtyard : 736.26 sq. ft.



**PRESIDENTIAL TYPE C (TOWER E,F,G,H)
GROUND FLOOR**

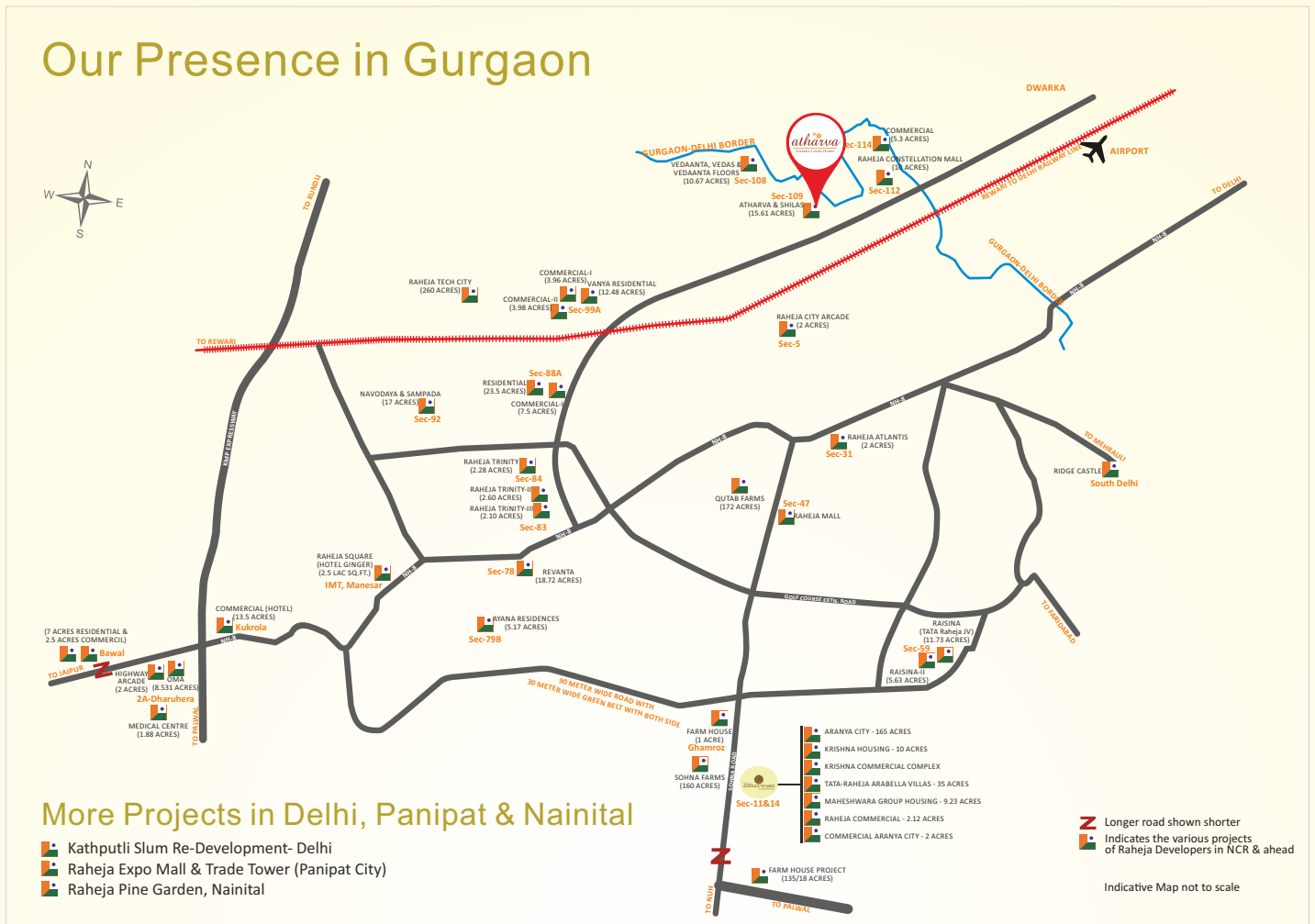
PRESIDENTIAL TYPE C (TOWER E,F,G,H)

Saleable Area : 4023.95 sq. ft. & Courtyard : 1187.15 sq. ft.

SITE PLAN



Our Presence in Gurgaon



Why you should invest in Dwarka Expressway?

- It has the largest commercial belt under Gurgaon- Manesar Master plan 2031
- A high-speed link road in close proximity to the national capital and IGI airport with wide motorable sector roads already in place.
- A diplomatic enclave like Chankya Puri has been approved for embassies to have its offices here.
- The Metro rail project and Mass Rapid Transit system corridor along this is expected to begin soon.
- Primary infrastructure that includes work on sewer lines, electricity cabling and laying of water pipelines has already commenced.
- Top brands in healthcare, education, entertainment and hospitality have taken up sites for schools, hospitals, hotels etc. DPS, Modern Schools have already started constructing their schools in the area.

If you were searching for that dream home of yours, chances are, this is where your search ends.



406, 4th Floor, Rectangle 'One', D-4, District Centre, Saket, New Delhi-110017
Ph.: 011-40611111 • Email:marketing@raheja.com • www.raheja.com

